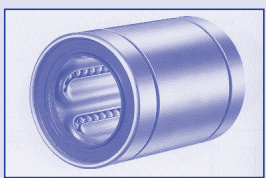


A PRECISION LINEAR BEARINGS

**3mm-25mm
BORES**

METRIC SIZES

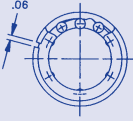
PLEASE REFER TO INDEX FOR MOUNTING ACCESSORIES.



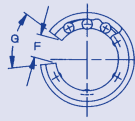
New



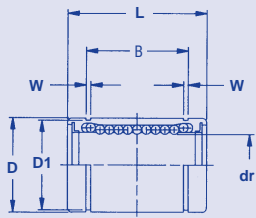
CLOSED



ADJUSTABLE



OPEN



FOR SHAFTING SEE PAGE 55A & 56A

See catalog pages 76A-95A & 98A for Linear bearings supplied with housing

Material:
Outer Housing - High Carbon Chromium Steel
Balls - 52100 Chrome Steel
Retainer - Resin

ORDER BY CATALOG NUMBER

Catalog No.	No. of Ball Circuits	Catalog No.	No. of Ball Circuits	Catalog No.	No. of Ball Circuits	dr Shaft Dia.	D	D1	W
Closed		Adjustable		Open					
ABS-M2-1	4	-	-	-	-	3	7	-	-
ABS-M2-2	4	-	-	-	-	4	8	-	-
ABS-M2-3	4	-	-	-	-	5	10	9.6	1.1
ABS-M2-4	4	ABS-N2-4	4	-	-	6	12	11.5	1.1
ABS-M2-5	4	ABS-N2-5	4	-	-	8	15	14.3	1.1
ABS-M2-6	4	ABS-N2-6	4	-	-	8	15	14.3	1.1
ABS-M2-7	4	ABS-N2-7	4	ABS-P2-7	3	10	19	18	1.3
ABS-M2-8	4	ABS-N2-8	4	ABS-P2-8	3	12	21	20	1.3
ABS-M2-9	4	ABS-N2-9	4	ABS-P2-9	3	13	23	22	1.3
ABS-M2-10	4	ABS-N2-10	4	ABS-P2-10	3	16	28	27	1.6
ABS-M2-11	5	ABS-N2-11	5	ABS-P2-11	4	20	32	30.5	1.6
ABS-M2-12	6	ABS-N2-12	6	ABS-P2-12	5	25	40	38	1.85

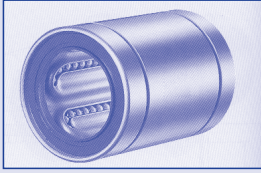
Catalog No.	L	Tolerance on L	B	HOUSING		Basic Dynamic Load Rating Lbs	Basic Static Load Rating Lbs.	Adjustable h open		0
				BORE	TOLERANCE					
-1	10	0-0.12	-	7	0-9	69	105	-	-	-
-2	12		-	8		88	127	-	-	-
-3	15		10.2	10		167	206	-	-	-
-4	19		13.5	12	206	265	1	--	-	
-5	17		11.5	16	176	216	1	-	-	
-6	24		17.5	16	274	392	1	-	-	
-7	29	0-0.2	22	19	0-11	372	549	1	6.8	80°
-8	30		23	21		510	784	1.5	8	80°
-9	32		23	23		510	784	1.5	9	80°
-10	37		26.5	28	774	1,180	1.5	11	80°	
-11	42		30.5	32	882	1,370	1.5	11	60°	
-12	59		0-0.3	41	40	0-16	980	1,570	2	12

Stainless steel available on request. Inquire about additional sizes and seals.

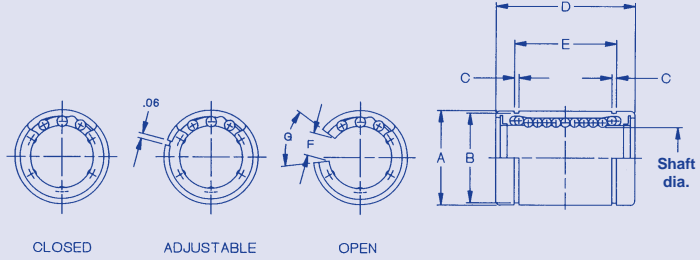
61A (800) 243-0986
In CT (203) 775-4877

NORDEX

PLEASE REFER TO INDEX FOR MOUNTING ACCESSORIES.



New



FOR SHAFTING SEE PAGE 55A & 56A

See catalog pages 76A-95A & 98A for Linear bearings supplied with housing

Material:
Outer Housing - High Carbon Chromium Steel
Balls - 52100 Chrome Steel
Retainer - Resin

ORDER BY CATALOG NUMBER

*Stainless steel bearing with resin retainer

Catalog No.	No. of Ball Circuits	Catalog No.	No. of Ball Circuits	Catalog No.	No. of Ball Circuits	Shaft Dia.	A	B	C
Closed		Adjustable		Open					
*ABS-M1-2	4	-	-	-	-	.1250	.3125	.2902	.028
*ABS-M1-3	4	-	-	-	-	.1875	.3750	.3520	.028
ABS-M1-4	4	ABS-N1-4	4	-	-	.250	.5000	.4687	.039
ABS-M1-6	4	ABS-N1-6	4	-	-	.375	.6250	.5880	.039
ABS-M1-8	4	ABS-N1-8	4	ABS-P1-8	3	.500	.8750	.8209	.0459
ABS-M1-10	4	ABS-N1-10	4	ABS-P1-10	3	.625	1.1250	1.0590	.0559
ABS-M1-12	5	ABS-N1-12	5	ABS-P1-12	4	.750	1.2500	1.1760	.0559
ABS-M1-16	6	ABS-N1-16	6	ABS-P1-16	5	1.000	1.5625	1.4687	.0679

Catalog No.	D	Tolerance on D	E	HOUSING		Basic Dynamic Load Rating Lbs	Basic Static Load Rating Lbs.	F	G
				BORE	TOLERANCE				
-2	.5000	+.000 -.008	.3681	.3125	+0/-.00045	13	17	-	-
-3	.5625		.4311	.3750		20	25	-	-
-4	.7500		.5110	.5000		46	59	-	-
-6	.8750		.6358	.6250	+0 -.0005	51	70	-	-
-8	1.250		.9625	.8750		114	174	.34	80°
-10	1.5000		1.1039	1.125		174	264	.375	80°
-12	1.6250	1.1657	1.2500	+0 -.00065	194	308	.4375	60°	
-16	2.2500	1.7547	1.5625		220	352	.46	50°	

* Consult with Nordex engineering for proper installation.

Stainless steel available on request. Inquire about additional sizes and seals.